



Maxforce[®] FC SELECT

PROFESSIONAL INSECT CONTROL ROACH KILLER BAIT GEL

FOR USE IN COMMERCIAL, INDUSTRIAL AND RESIDENTIAL AREAS

ACTIVE INGREDIENT: Fipronil*, (5-Amino-1-(2,6-dichloro-4-trifluoromethyl) phenyl)-4-(1, R, S)-(trifluoromethyl) sulfinyl)-1H-pyrazole-3-carbonitrile;..... 0.01%
OTHER INGREDIENTS:..... 99.99%

Total:..... 100.00%

*CAS NO. 120068-37-3

EPA Reg. No. 432-1259 EPA Est. No. 071106-GA-003

**STOP - READ THE LABEL BEFORE USE
KEEP OUT OF REACH OF CHILDREN**

CAUTION

Product may stain textiles and clothing.

FIRST AID

- | | |
|--------------------------------|---|
| If on skin or clothing: | <ul style="list-style-type: none"> • Take off contaminated clothing. • Rinse skin immediately with plenty of water for 15-20 minutes. • Call a poison control center or doctor for treatment advice. |
| If on eyes: | <ul style="list-style-type: none"> • Hold eye open and rinse slowly and gently with water for 15-20 minutes. • Remove contact lenses, if present, after the first 5 minutes, then continue rinsing. • Call a poison control center or doctor for treatment advice. |

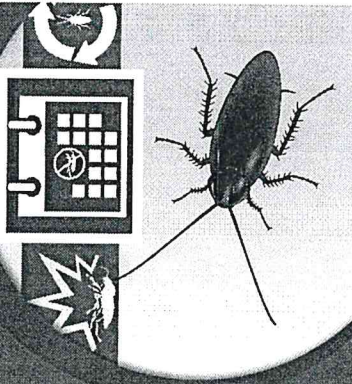
Have the product container or label with you when calling a poison control center or doctor or going for treatment. You may also contact 1-800-334-7577 for emergency medical treatment information.

**Contents: 4 Reservoirs
30g (1.06 Oz) each
Total Net Weight: 120g (4.23 Oz)**

79434820
80251335B 140410AV2

See back and side panels for complete Precautionary Statements, Hazards, Directions for Use and additional instructions.

Cockroaches



5.25"

HAZARDS TO HUMANS AND DOMESTIC ANIMALS

Keep gel away from foods and food contact surfaces. Do not use this product in or on electrical equipment where a possibility of shock hazard exists.

DIRECTIONS FOR USE

It is a violation of Federal Law to use this product in a manner inconsistent with its labeling.

MAXFORCE® FC Select Professional Insect Control Reach Killer Gel may be used as a spot or crack and crevice treatment for the indoor and outdoor (adjacent to homes & structures) control of cockroaches in residential areas and the non-food/non-feed areas of institutional, warehousing and commercial establishments, including warehouses, restaurants, food processing plants, supermarkets, veterinary, nursing homes, motels, hotels, apartment buildings, bakeries, beverage plants, breweries, bottling facilities, candy plants, canneries, cereal processing and manufacturing plants, dairies and dairy product processing plants, frozen food plants, schools, laboratories, computer facilities, sewers, "aircraft," buses, boats/ships, trains, homes, houses, industrial buildings, office buildings, kennels, kitchens, manufacturing facilities, spice plants, stores, wineries, museums, meat processing and packaging plants, meat and vegetable canneries, pet shops and zoos. Non-food/non-feed areas include bedrooms, living rooms, bathrooms, closets, media rooms, garbage rooms, lavatories, entries, vestibules, offices, locker rooms, machine rooms, boiler rooms, garages, mop closets, and storage (after canning or bottling). This product may also be used in food/feed areas of food/feed handling establishments as outlined below.

USE RESTRICTIONS

Do not treat food preparation surfaces. Do not apply bait gel to areas which have been recently sprayed with insecticide, and do not spray insecticide over gel as it may cause the gel to become repellent.

USE ONLY IN AREAS NOT EASILY ACCESSIBLE TO CHILDREN AND PETS. In zoos, apply only in areas inaccessible to zoo animals.

APPLICATION DIRECTIONS

For reach gel: Application rate is dependent on level of infestation and species to be controlled see application rate table. Apply bait as a spot or as a bead in cracks and crevices. The lower application rate should be used for low to moderate infestations or re-treatments, and the higher rate for more severe infestations or where the population occurs in inaccessible areas. Gel placements should be at or near harborage or aggregation areas, such as corners, or cracks and crevices. Numerous smaller placements will provide faster control than fewer larger spots, especially for German cockroach control.

Place bait under baseboards, sills, countertops, seats,

in crack and crevices as well as voids where insects harbor. For outdoor use (adjacent to home -or- structure): Place bait in areas adjacent to structures where roaches may nest or breed. Apply bait to potential points of insect entry, such as eaves, sills, and expansion joints.

Apply bait in protected areas whenever possible. Environmental stresses such as direct sunlight and water will reduce the residual effectiveness. Priority treatment areas may be identified by visual inspection of such areas listed above or aided by trapping techniques or spot flushing.

Refillable stations: This product may be used in the Maxforce Refillable Bait Station or B&G Perimeter Patrol Station. Refillable stations should be placed every 20 to 30 feet around the perimeter of a structure. Use approximately 2 stations per side of a typical single family home. The quantity of Maxforce FC Select Professional Insect Control Reach Killer Bait Gel bait added to the bait station will vary depending on the severity of infestations, see the application rate table. Do not exceed 2 - 4 spots per station (3" - 6" diameter).

For best results, place stations near: air conditioning units, water faucets, foundation vents and weep holes, decks, utility entryways (e.g. electrical, cable TV), and wherever cockroaches are frequently found.

Regularly inspect all stations and replace bait as needed for continual control.

Position Refillable Bait Stations adjacent to structure in areas where they will not be damaged by lawn equipment such as mowers and trimmers. When placing the station in turf remove sod layer and place station base plate against the soil.

INDOOR USE:

Applications in Food/Feed Handling Establishments: Application within food/feed areas of food/feed handling establishments is limited to crack and crevice treatment only. If gel contacts an exposed surface where food is handled, remove gel, and wash exposed surface with an effective cleaning compound followed by a potable water-rinse prior to use. Apply with Maxforce Bait Injector directly into cracks and crevices. Place applicator tip 1/2 inch into cracks, crevices, holes and other small openings where roaches may be a problem. Apply small amounts of gel per spot. Do not apply bait to areas where food/feed, utensils, or processing surfaces may become contaminated. Do not apply bait to areas that are routinely washed such as cracks and crevices in tops of tables, food/feed preparation, and prepared food holding surfaces as bait may be removed by washing. Do not apply bait to surfaces where the temperature exceeds 130°F as bait may run. Examples include, but are not limited to, coffee urns, steam tables, baskets, fryers, dishwashers, and hot water pipes. Care should be taken to avoid depositing gel onto exposed surfaces. If gel contacts an exposed surface, remove gel and wash exposed surface. Food/feed areas include areas for receiving, storage, packing (canning,

and enclosed processing systems (mills, dairies, edible oils, syrups). Serving areas are also considered a food/feed area when food is exposed and facility is in operation. Apply bait in small amounts between different elements of construction, between equipment and floors, openings leading into voids and hollow spaces in floors, walls, ceilings, equipment legs and bases, around plumbing pipes, doors and windows, behind and under refrigerators, cabinets, sinks, closets, stoves, and other equipment where cockroaches hide. During follow-up visits inspect bait placements and reapply when necessary.

Application of this product in food/feed areas of food/feed handling establishments other than as a crack and crevice treatment is not permitted.

Break-up Reservoir: Prior to use, break the snap-top closed end of the gel reservoir at the scored line. After use, the reservoir may be resealed with the end cap for future use. The black outlet cap is reusable.

Directions for changing reservoirs: With the arrow on the drive rod pointing up, pull the drive rod out as far as it will go. Remove the empty reservoir. Do not reuse empty reservoirs, place in trash. Reservoirs that still contain gel can be sealed with the end cap and outlet cap for future use. To attach a new reservoir follow the above directions.

| SPECIES/LEVEL OF INFESTATION | APPLICATION RATE (PER SQ YD) |
|--|--|
| MODERATE INFESTATIONS OR RE-TREATS FOR GERMAN OR BROWN-BANDED ROACHES: | 1-2 SPOTS (DIME SIZED) OR 1 1/2" - 3" BEAD |
| SEVERE OR HEAVY INFESTATIONS FOR GERMAN OR BROWN-BANDED ROACHES | 2-4 SPOTS (QUARTER SIZED) OR 3" - 6" BEAD |
| LARGE ROACHES SUCH AS AMERICAN, SMOKEY-BROWN OR ORIENTAL | RECOMMENDED SPOT SIZE 1 1/2" - 1 1/2" |

Do not treat food preparation surfaces. Do not apply bait gel to areas which have been recently sprayed with insecticide, and do not spray insecticide over gel as it may cause the bait to become repellent.

Gel placements should be at, or near, harborage or aggregation areas such as corners, or cracks and crevices. Numerous smaller placements will provide faster control than fewer larger spots, especially for German cockroach control.

For outdoor use (adjacent to home -or- structure): Place in cracks or crevices adjacent to structures where large roaches may nest or breed. Apply bait to potential points of insect entry, such as eaves, sills, and expansion joints. Apply bait in protected areas whenever possible.

Environmental stresses such as direct sunlight and water will reduce the residual effectiveness.

Do not exceed 1 tsp. per station.

If the station is not equipped with a sticker to identify the contents, apply a sticker to the inside of the station.

3.375"



Maxforce[®] FC SELECT

PROFESSIONAL INSECT CONTROL ROACH KILLER BAIT GEL

Note: Do not remove this label. Use only in areas not easily accessible to children and pets.

ACTIVE INGREDIENT: Ipermethrin 0.01%

OTHER INGREDIENTS: 99.99%

TOTAL 100.00%

TCAS No. 120055-37-3

EPA Reg. No. 432-1259

EPA Est. No. 071109-GA-003

KEEP OUT OF REACH OF CHILDREN AND PETS

CAUTION

Keep gel away from foods and feed contact surfaces. Harmful if absorbed through skin. Causes moderate eye irritation. Avoid contact with skin, eyes, and clothing. Wash thoroughly with soap and water after handling.

Net Weight: 30g (1.06 Oz)
78434620 80794051B 1404104V2

Bayer

CONTAINER HANDLING: If empty, do not reuse container. Place in trash or other for recycling if available. If partly filled, call your local solid waste agency or 1-800-CLEANUP for disposal instructions. Never place unused product, empty container or outdoor trash in your home or workplace.

May stain fabrics, surfaces and other materials. Refer to label for complete First Aid, Directions for Use, Precautionary Statements and Storage and Disposal Instructions.

Product of China
Produced for:
Bayer Environmental Science
A Division of Bayer CropScience LP
2 T. W. Alexander Drive
Research Triangle Park, NC 27709
Product of China

75"



**MAXFORCE® FC PROFESSIONAL INSECT CONTROL®
ROACH KILLER BAIT GEL**

Version 2.0 / USA
102000019405

1/10
Revision Date: 11/06/2014
Print Date: 11/06/2014

**SECTION 1: IDENTIFICATION OF THE SUBSTANCE/MIXTURE AND OF THE
COMPANY/UNDERTAKING**

Product identifier

Trade name MAXFORCE® FC PROFESSIONAL INSECT CONTROL® ROACH
KILLER BAIT GEL

Product code (UVP) 79248121

SDS Number 102000019405

EPA Registration No. 432-1259

Relevant identified uses of the substance or mixture and uses advised against

Use Insecticide

Restrictions on use See product label for restrictions.

Information on manufacturer

Bayer Environmental Science
2 T.W. Alexander Drive
Research Triangle PK, NC 27709
United States

Emergency telephone no.

**Emergency Telephone
Number (24hr/ 7 days)** 1-800-334-7577 (24 hours/day)

**Product Information
Telephone Number** 1-800-331-2867

SDS Information or Request SDSINFO.BCS-NA@bayer.com

SECTION 2: HAZARDS IDENTIFICATION

Classification in accordance with regulation HCS 29CFR §1910.1200

This material is not hazardous under the criteria of the Federal OSHA Hazard Communication Standard 29CFR 1910.1200.

Other hazards

No particular hazards known.

SECTION 3: COMPOSITION/INFORMATION ON INGREDIENTS

| Hazardous Component Name | CAS-No. | Concentration % by weight |
|--------------------------|-------------|---------------------------|
| Fipronil | 120068-37-3 | 0.01 |



**MAXFORCE® FC PROFESSIONAL INSECT CONTROL®
ROACH KILLER BAIT GEL**

Version 2.0 / USA
102000019405

2/10
Revision Date: 11/06/2014
Print Date: 11/06/2014

SECTION 4: FIRST AID MEASURES

Description of first aid measures

| | |
|-----------------------|---|
| General advice | When possible, have the product container or label with you when calling a poison control center or doctor or going for treatment. |
| Inhalation | Move to fresh air. If person is not breathing, call 911 or an ambulance, then give artificial respiration, preferably mouth-to-mouth if possible. Call a physician or poison control center immediately. |
| Skin contact | Take off contaminated clothing and shoes immediately. Wash off immediately with plenty of water for at least 15 minutes. Call a physician or poison control center immediately. |
| Eye contact | Hold eye open and rinse slowly and gently with water for 15-20 minutes. Remove contact lenses, if present, after the first 5 minutes, then continue rinsing eye. Call a physician or poison control center immediately. |
| Ingestion | Call a physician or poison control center immediately. Rinse out mouth and give water in small sips to drink. DO NOT induce vomiting unless directed to do so by a physician or poison control center. Never give anything by mouth to an unconscious person. Do not leave victim unattended. |

Most important symptoms and effects, both acute and delayed

Symptoms The following symptoms may occur:, Restlessness, Anxiety, Tremors

Indication of any immediate medical attention and special treatment needed

Treatment Appropriate supportive and symptomatic treatment as indicated by the patient's condition is recommended. There is no specific antidote.

SECTION 5: FIREFIGHTING MEASURES

Extinguishing media

Suitable Dry chemical, Foam, Water, Carbon dioxide (CO₂)

Unsuitable None known.

Special hazards arising from the substance or mixture Dangerous gases are evolved in the event of a fire.

Advice for firefighters

Special protective equipment for fire-fighters Firefighters should wear NIOSH approved self-contained breathing apparatus and full protective clothing.

Further information Keep out of smoke. Fight fire from upwind position. Cool closed containers exposed to fire with water spray. Do not allow run-off from fire fighting to enter drains or water courses.



**MAXFORCE® FC PROFESSIONAL INSECT CONTROL®
ROACH KILLER BAIT GEL**

Version 2.0 / USA
102000019405

3/10
Revision Date: 11/06/2014
Print Date: 11/06/2014

| | |
|--------------------------|-------------------|
| Flash point | not applicable |
| Autoignition temperature | no data available |
| Lower explosion limit | not applicable |
| Upper explosion limit | not applicable |
| Explosivity | no data available |

SECTION 6: ACCIDENTAL RELEASE MEASURES

Personal precautions, protective equipment and emergency procedures

Precautions Keep unauthorized people away. Isolate hazard area. Avoid contact with spilled product or contaminated surfaces.

Methods and materials for containment and cleaning up

Methods for cleaning up Collect and transfer the product into a properly labelled and tightly closed container. Clean contaminated floors and objects thoroughly, observing environmental regulations.

Additional advice Use personal protective equipment. Do not allow to enter soil, waterways or waste water canal.

Reference to other sections Information regarding safe handling, see section 7.
Information regarding personal protective equipment, see section 8.
Information regarding waste disposal, see section 13.

SECTION 7: HANDLING AND STORAGE

Precautions for safe handling

Advice on safe handling Product will stain porous surfaces. Use only in area provided with appropriate exhaust ventilation.

Hygiene measures Keep away from food, drink and animal feedingstuffs.
Wash hands thoroughly with soap and water after handling and before eating, drinking, chewing gum, using tobacco, using the toilet or applying cosmetics.

Conditions for safe storage, including any incompatibilities

Requirements for storage areas and containers Keep away from direct sunlight. Keep out of reach of children and animals. Keep containers tightly closed in a dry, cool and well-ventilated place.



**MAXFORCE® FC PROFESSIONAL INSECT CONTROL®
ROACH KILLER BAIT GEL**

Version 2.0 / USA
102000019405

4/10
Revision Date: 11/06/2014
Print Date: 11/06/2014

SECTION 8: EXPOSURE CONTROLS/PERSONAL PROTECTION

Control parameters

| Components | CAS-No. | Control parameters | Update | Basis |
|----------------------------------|-------------|-----------------------|---------|----------|
| Fipronil (Particulate.) | 120068-37-3 | 50ug/m3 (ST ESL) | 02 2013 | TX ESL |
| Fipronil (Particulate.) | 120068-37-3 | 5ug/m3 (AN ESL) | 02 2013 | TX ESL |
| Fipronil | 120068-37-3 | 0.035 mg/m3 (TWA) | | OES BCS* |
| 1,2-Propanediol (Vapor.) | 57-55-6 | 1000ug/m3 (ST ESL) | 02 2013 | TX ESL |
| 1,2-Propanediol (Vapor.) | 57-55-6 | 50ppb (AN ESL) | 02 2013 | TX ESL |
| 1,2-Propanediol (Vapor.) | 57-55-6 | 500ppb (ST ESL) | 02 2013 | TX ESL |
| 1,2-Propanediol (Vapor.) | 57-55-6 | 100ug/m3 (AN ESL) | 02 2013 | TX ESL |
| 1,2-Propanediol (Aerosol.) | 57-55-6 | 10 mg/m3 (TWA) | 2010 | WEEL |
| Starch | 9005-25-8 | 10 mg/m3 (TWA) | 02 2012 | ACGIH |
| Starch (Total) | 9005-25-8 | 10 mg/m3 (REL) | 2010 | NIOSH |
| Starch (Respirable.) | 9005-25-8 | 5 mg/m3 (REL) | 2010 | NIOSH |
| Starch (Total dust.) | 9005-25-8 | 15 mg/m3 (PEL) | 02 2006 | OSHA Z1 |
| Starch (Respirable fraction.) | 9005-25-8 | 5 mg/m3 (PEL) | 02 2006 | OSHA Z1 |
| Starch (Total dust.) | 9005-25-8 | 15 mg/m3 (TWA) | 1989 | OSHA Z1A |
| Starch (Respirable fraction.) | 9005-25-8 | 5 mg/m3 (TWA) | 1989 | OSHA Z1A |
| Starch (Total dust.) | 9005-25-8 | 15 mg/m3 (TWA) | 06 2008 | TN OEL |
| Starch (Respirable fraction.) | 9005-25-8 | 5 mg/m3 (TWA) | 06 2008 | TN OEL |
| Starch (Particulate.) | 9005-25-8 | 50ug/m3 (ST ESL) | 02 2013 | TX ESL |
| Starch (Particulate.) | 9005-25-8 | 5ug/m3 (AN ESL) | 02 2013 | TX ESL |

*OES BCS: Internal Bayer CropScience "Occupational Exposure Standard"

Exposure controls



**MAXFORCE® FC PROFESSIONAL INSECT CONTROL®
ROACH KILLER BAIT GEL**

Version 2.0 / USA
102000019405

5/10
Revision Date: 11/06/2014
Print Date: 11/06/2014

Personal protective equipment

In normal use and handling conditions please refer to the label and/or leaflet. In all other cases the following recommendations would apply.

| | |
|------------------------------------|---|
| Respiratory protection | Respiratory protection is not required under anticipated circumstances of exposure. |
| Hand protection | Chemical resistant nitrile rubber gloves |
| Eye protection | Safety glasses with side-shields |
| Skin and body protection | Skin contact should be prevented. Wear long-sleeved shirt and long pants and shoes plus socks. |
| General protective measures | Follow manufacturer's instructions for cleaning/maintaining PPE. If no such instructions for washables, use detergent and warm/tepid water. Keep and wash PPE separately from other laundry. |

SECTION 9. PHYSICAL AND CHEMICAL PROPERTIES

| | |
|---|-------------------|
| Appearance | brown |
| Physical State | gel |
| Odor | slight |
| Odour Threshold | no data available |
| pH | no data available |
| Vapor Pressure | no data available |
| Vapor Density (Air = 1) | no data available |
| Specific Gravity | no data available |
| Evaporation rate | no data available |
| Boiling Point | no data available |
| Melting / Freezing Point | no data available |
| Water solubility | soluble |
| Minimum Ignition Energy | not applicable |
| Decomposition temperature | not applicable |
| Partition coefficient: n-octanol/water | not applicable |
| Viscosity | no data available |
| Flash point | not applicable |



MAXFORCE® FC PROFESSIONAL INSECT CONTROL®
ROACH KILLER BAIT GEL

Version 2.0 / USA
102000019405

6/10
Revision Date: 11/06/2014
Print Date: 11/06/2014

| | |
|---------------------------------|-------------------|
| Autoignition temperature | no data available |
| Lower explosion limit | not applicable |
| Upper explosion limit | not applicable |
| Explosivity | no data available |

SECTION 10: STABILITY AND REACTIVITY

Reactivity

| | |
|---|---|
| Thermal decomposition | not applicable |
| Chemical stability | Stable under normal conditions. |
| Possibility of hazardous reactions | No dangerous reaction known under conditions of normal use. |
| Conditions to avoid | Extremes of temperature and direct sunlight. Exposure to moisture. |
| Incompatible materials | no data available |
| Hazardous decomposition products | No decomposition products expected under normal conditions of use. |

SECTION 11: TOXICOLOGICAL INFORMATION

| | |
|--------------------------|--|
| Exposure routes | Eye contact, Skin Absorption, Skin contact, Ingestion |
| Immediate Effects | |
| Eye | Moderate eye irritation. |
| Skin | May cause slight irritation. Harmful if absorbed through skin. |

Information on toxicological effects

| | |
|----------------------------------|--------------------------------|
| Acute oral toxicity | LD50 (rat) > 5,000 mg/kg |
| Acute inhalation toxicity | no data available |
| Acute dermal toxicity | LD50 (rat) > 5,000 mg/kg |
| Skin irritation | Slight irritation (rabbit) |
| Eye irritation | Minimally irritating. (rabbit) |
| Sensitisation | Non-sensitizing. (guinea pig) |

Assessment repeated dose toxicity

Fipronil caused specific target organ toxicity in experimental animal studies in the following organ(s):



MAXFORCE® FC PROFESSIONAL INSECT CONTROL®
ROACH KILLER BAIT GEL

Version 2.0 / USA
102000019405

7/10
Revision Date: 11/06/2014
Print Date: 11/06/2014

liver. Fipronil caused neurobehavioral effects and/or neuropathological changes in animal studies.

Assessment Mutagenicity

Fipronil was not mutagenic or genotoxic in a battery of in vitro and in vivo tests.

Assessment Carcinogenicity

Fipronil caused an increased incidence of tumours in rats in the following organ(s): Thyroid. The mechanism that triggers tumours in rodents and the type of tumours observed are not relevant to humans.

ACGIH

None.

NTP

None.

IARC

None.

OSHA

None.

Assessment toxicity to reproduction

Fipronil caused reproduction toxicity in a two-generation study in rats only at dose levels also toxic to the parent animals. The reproduction toxicity seen with Fipronil is related to parental toxicity.

Assessment developmental toxicity

Fipronil did not cause developmental toxicity in rats and rabbits.

Further information

Acute toxicity studies have been bridged from a similar formulation(s).
The non-acute information pertains to the active ingredient(s).

SECTION 12: ECOLOGICAL INFORMATION

| | |
|--|---|
| Toxicity to fish | LC50 (Oncorhynchus mykiss (rainbow trout)) 0.25 mg/l Exposure time: 96 h The value mentioned relates to the active ingredient fipronil. |
| Toxicity to aquatic invertebrates | EC50 (Daphnia magna (Water flea)) 0.19 mg/l Exposure time: 48 h The value mentioned relates to the active ingredient fipronil. |
| Toxicity to aquatic plants | EC50 (Scenedesmus subspicatus) 0.068 mg/l Exposure time: 96 h The value mentioned relates to the active ingredient fipronil. |
| Biodegradability | Fipronil: ; not rapidly biodegradable |



**MAXFORCE® FC PROFESSIONAL INSECT CONTROL®
ROACH KILLER BAIT GEL**

Version 2.0 / USA
102000019405

8/10
Revision Date: 11/06/2014
Print Date: 11/06/2014

| | |
|----------------------------------|--|
| Koc | Fipronil: Koc: 427 - 1278 |
| Bioaccumulation | Fipronil: Bioconcentration factor (BCF) 321; Does not bioaccumulate. |
| Mobility in soil | Fipronil: Slightly mobile in soils |
| Environmental precautions | Do not apply directly to water, to areas where surface water is present or to intertidal areas below the mean high water mark. Do not contaminate surface or ground water by cleaning equipment or disposal of wastes, including equipment wash water. Do not allow to get into surface water, drains and ground water. Apply this product as specified on the label. |

SECTION 13: DISPOSAL CONSIDERATIONS

Waste treatment methods

| | |
|-------------------------------|---|
| Product | Follow container label instructions for disposal of wastes generated during use in compliance with the product label. Never place unused product down any indoor or outdoor drain. |
| Contaminated packaging | Do not re-use empty containers. Wrap and discard in trash. Follow advice on product label and/or leaflet. |
| RCRA Information | Characterization and proper disposal of this material as a special or hazardous waste is dependent upon Federal, State and local laws and are the user's responsibility. RCRA classification may apply. |

SECTION 14: TRANSPORT INFORMATION

According to national and international transport regulations this material is not classified as dangerous goods / hazardous material.

SECTION 15: REGULATORY INFORMATION

| | |
|--|----------|
| EPA Registration No. | 432-1259 |
| US Federal Regulations | |
| TSCA list | None. |
| US. Toxic Substances Control Act (TSCA) Section 12(b) Export Notification (40 CFR 707, Subpt D) | None. |
| SARA Title III - Section 302 - Notification and Information | None. |
| SARA Title III - Section 313 - Toxic Chemical Release Reporting | None. |



**MAXFORCE® FC PROFESSIONAL INSECT CONTROL®
ROACH KILLER BAIT GEL**

Version 2.0 / USA
102000019405

9/10
Revision Date: 11/06/2014
Print Date: 11/06/2014

**US States Regulatory Reporting
CA Prop65**

This product does not contain any substances known to the State of California to cause cancer.

This product does not contain any substances known to the State of California to cause reproductive harm.

US State Right-To-Know Ingredients

None.

**Canadian Regulations
Canadian Domestic Substance List**

None.

**Environmental
CERCLA**

None.

Clean Water Section 307 Priority Pollutants

None.

Safe Drinking Water Act Maximum Contaminant Levels

None.

EPA/FIFRA Information:

This chemical is a pesticide product registered by the Environmental Protection Agency and is subject to certain labeling requirements under federal pesticide law. These requirements differ from the classification criteria and hazard information required for safety data sheets, and for workplace labels of non-pesticide chemicals. Following is the hazard information required on the pesticide label:

Signal word: Caution!

Hazard statements: Keep exposed gel away from open food and food contact surfaces.
Harmful if absorbed through skin.
Moderate eye irritation.
Avoid contact with skin, eyes and clothing.
Wash thoroughly with soap and water after handling.

SECTION 16: OTHER INFORMATION

NFPA 704 (National Fire Protection Association):

Health - 1 Flammability - 1 Instability - 0 Others - none

HMS (Hazardous Materials Identification System, based on the Third Edition Ratings Guide)

Health - 1 Flammability - 1 Physical Hazard - 0 PPE -

0 = minimal hazard, 1 = slight hazard, 2 = moderate hazard, 3 = severe hazard, 4 = extreme hazard

Bayer Environmental Science
SAFETY DATA SHEET



MAXFORCE® FC PROFESSIONAL INSECT CONTROL®
ROACH KILLER BAIT GEL

Version 2.0 / USA
102000019405

10/10
Revision Date: 11/06/2014
Print Date: 11/06/2014

Reason for Revision: Revised according to the current OSHA Hazard Communication Standard (29CFR1910.1200)

Revision Date: 11/06/2014

This information is provided in good faith but without express or implied warranty. The customer assumes all responsibility for safety and use not in accordance with label instructions. The product names are registered trademarks of Bayer.